



Thank you for purchasing a Micro Warlock from TBRC Wings.

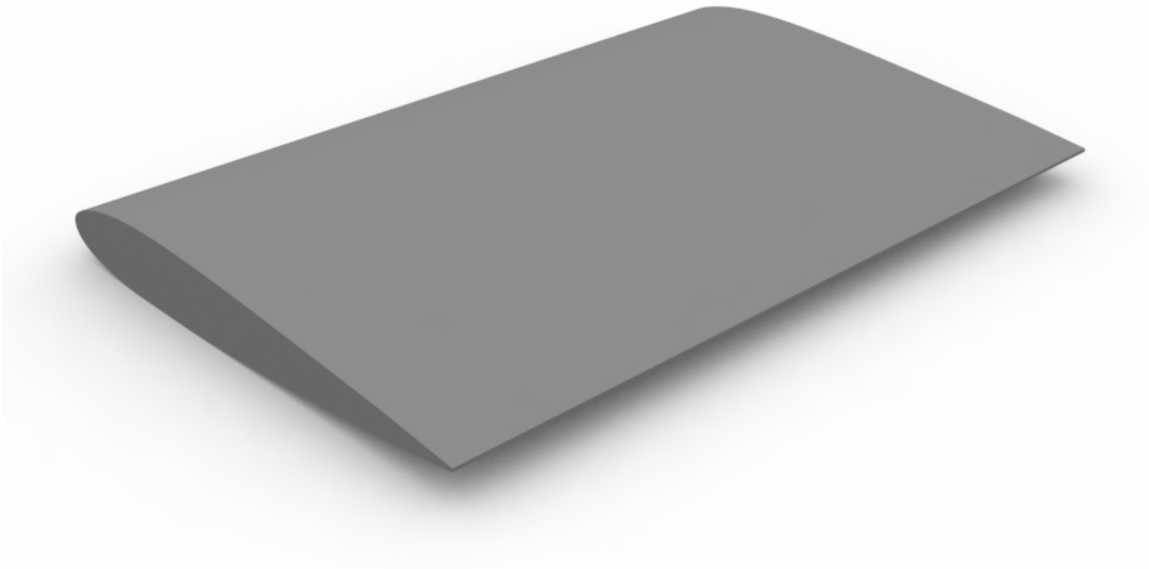
Kit Contents

- 1x Center wing panel
- 2x Outer wing panels
- 2x Tail booms
- 1x Fuselage
- 1x Coroplast horizontal stabilizer with built in elevator
- 2x Vertical stabilizers
- 3x 2mm fiberglass spars
- 2x Balsa ailerons
- 3x Plastic control horns for elevator and ailerons
- 1x 1.5 meters 3mil laminate
- 1x Decal set

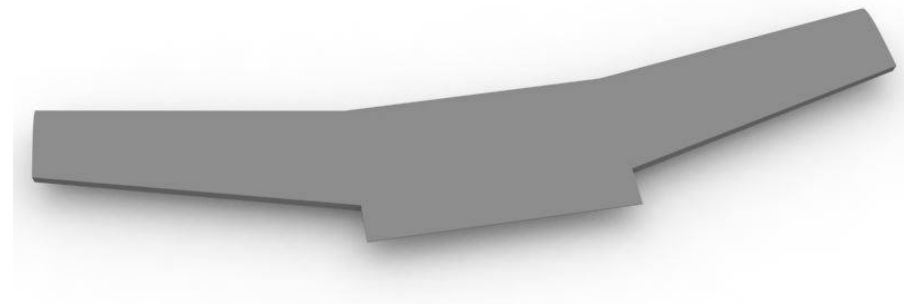
Center of Gravity (CG) is 11mm from the leading edge of the wing.

Step1

Trim 2mm off the trailing edge of the wing center section. This is so that it fits perfectly inside the booms.

**Step2**

Trim 25mm, the width of the ailerons, off the trailing edge of each outer wing panel. Glue the outer wing panels to the center wing section.



Step3

While the glue is drying on the wing panels cut spar channels into your fuselage and booms and install the fiberglass spars.

Fuselage Sparing bottom and sides.

For the bottom spar cut to 180mm. This will be installed in Step 11.

For the sides they are to be cut at 80mm lengths and can be installed now.

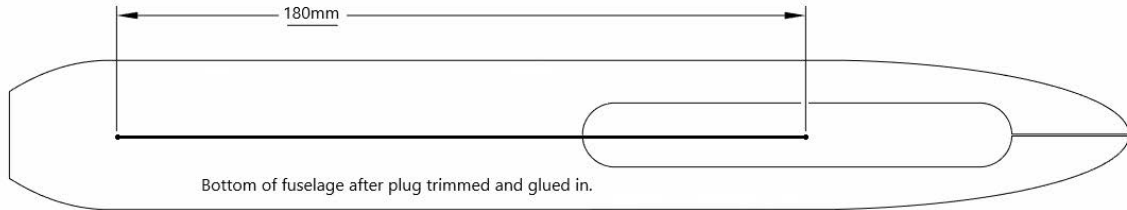
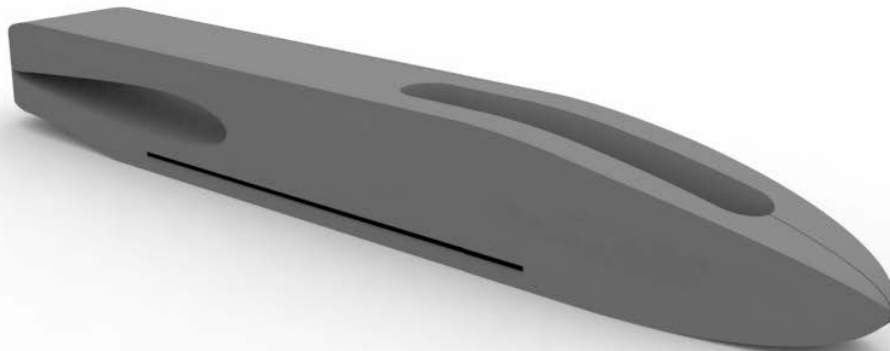
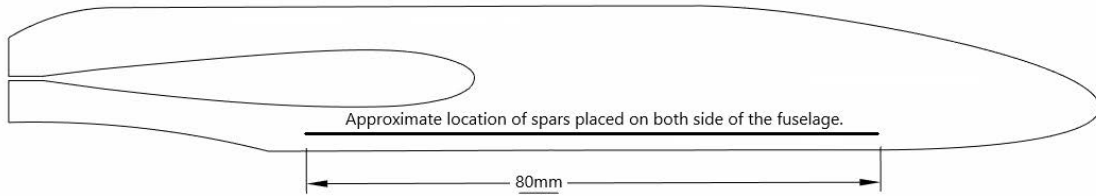
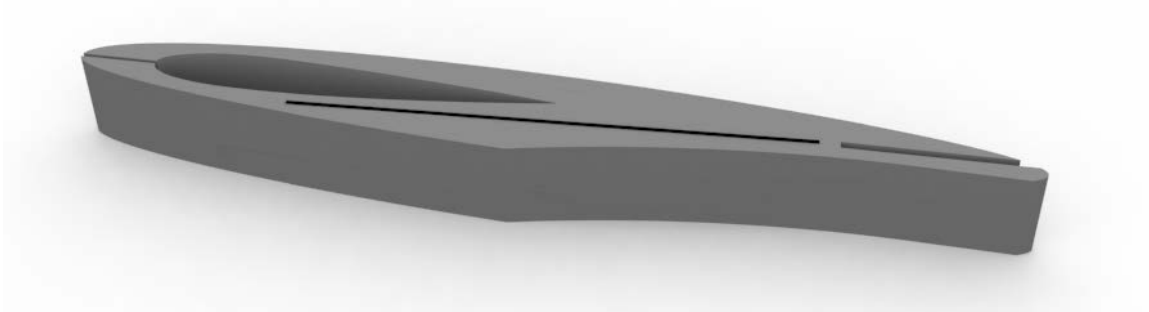
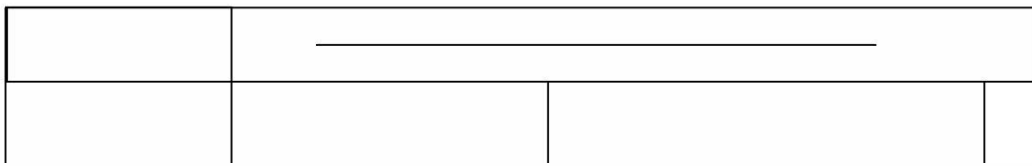
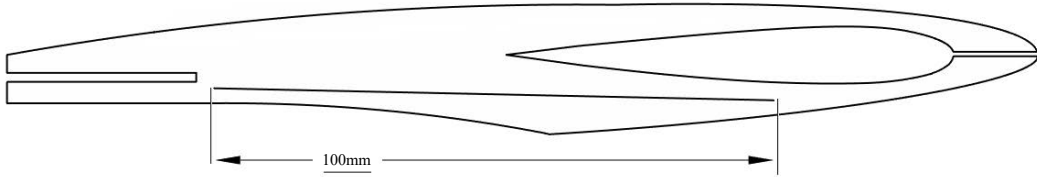


Diagram 3



Boom Spars

Cut the boom spars to 100mm lengths and install them on the top and sides of the booms as shown.

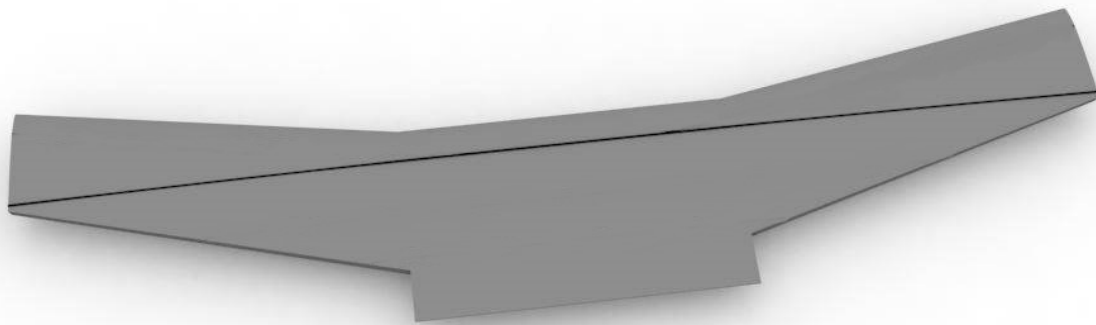
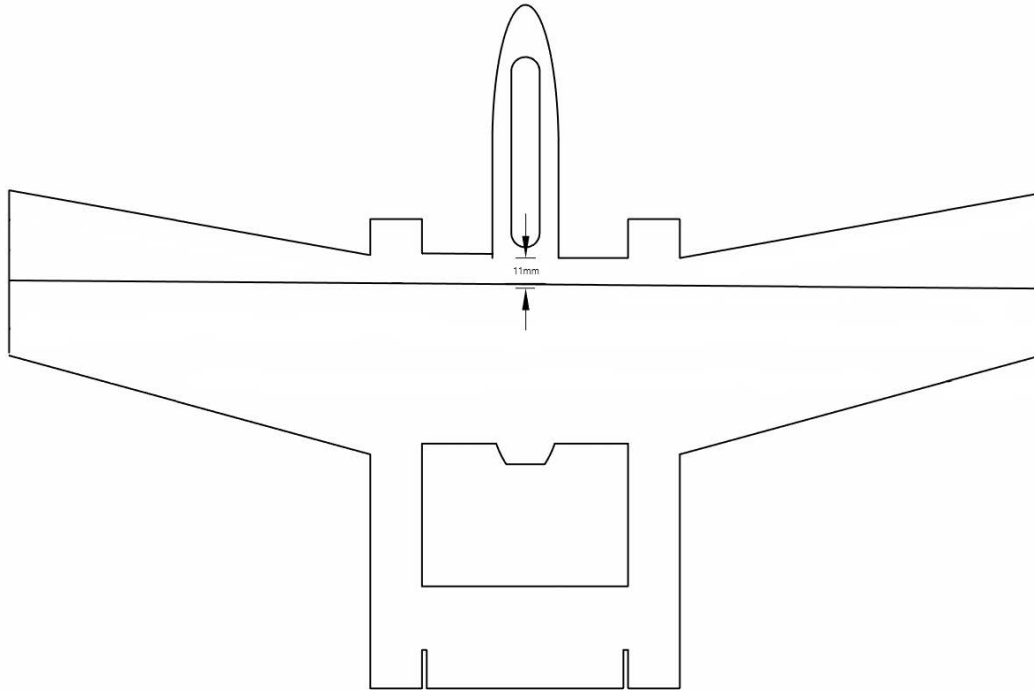


Step4

Cut and add the spars to your wing on top and bottom placed over each other. Be careful, make sure the wing is straight and true without any warps as the glue dries. Pay particular attention to the outer wing panels as not to twist them when weighting them in place. Be sure to spar top and bottom of the wing.

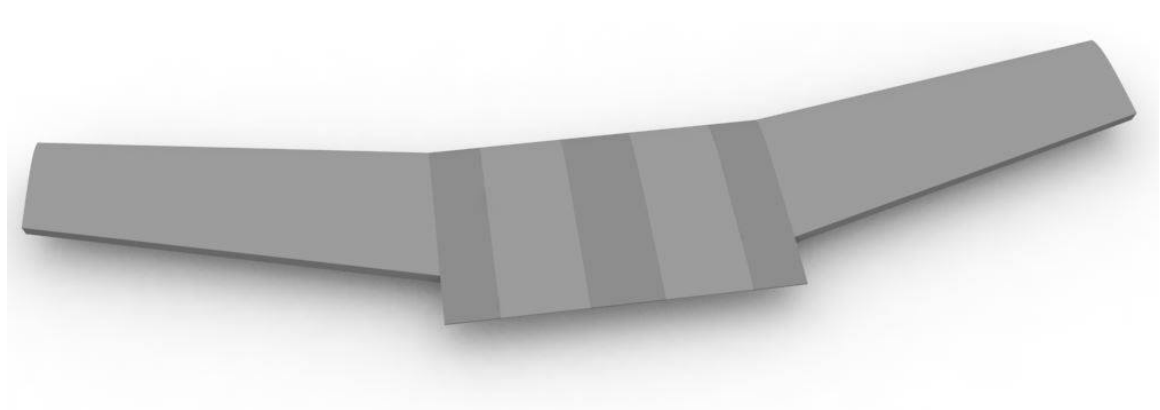
The main spar is 11mm back from the leading edge of the center section.

The main spar is also the Centre of Gravity (CG) line.



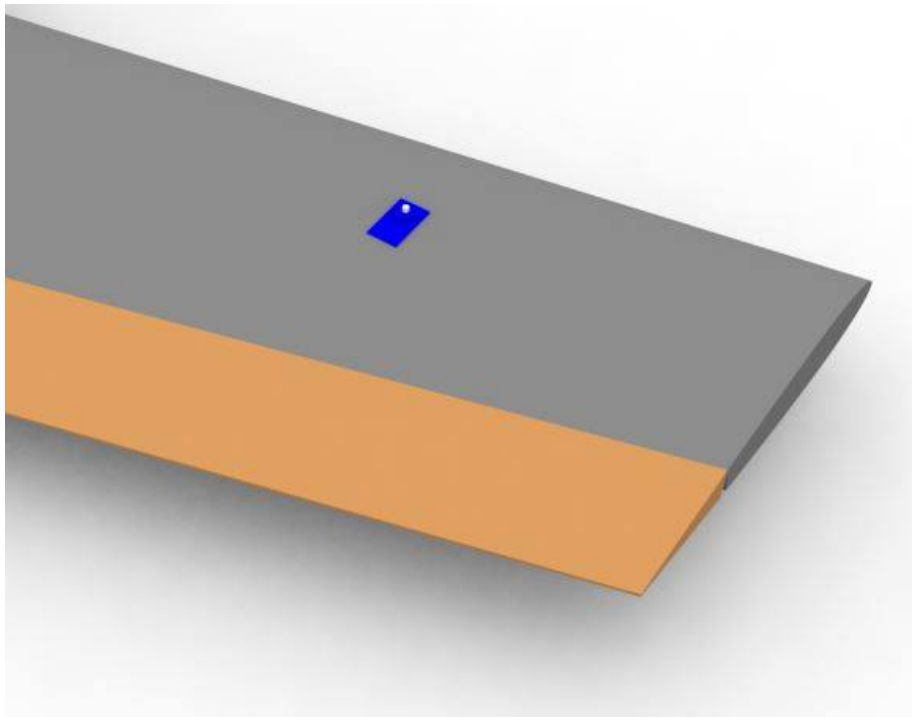
Step5

Laminate the wing with the supplied laminate. Cut out spaces in the laminate where the booms and fuselage will attach. This allows foam to foam contact for the best bond possible.



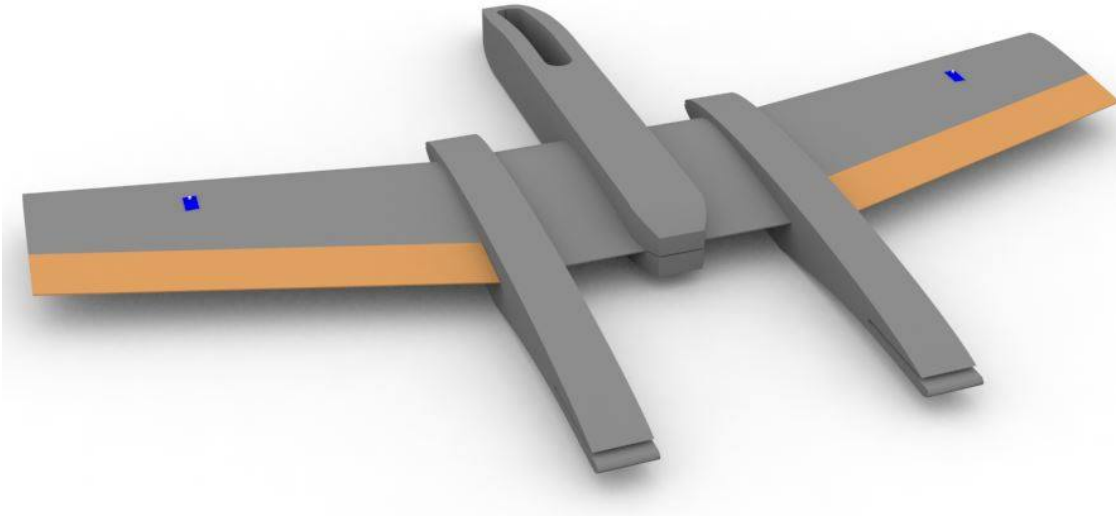
Step6

Laminate and install the ailerons to the outer portions of the wings. Install the aileron servos next. This allows the wires to be embedded in the wing and pass under the booms when installed.

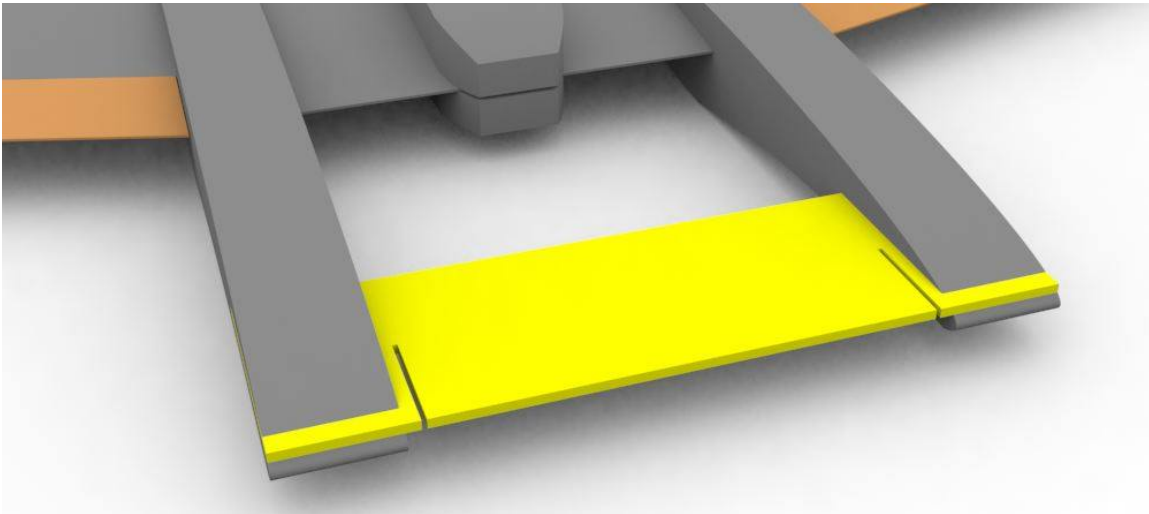


Step7

Glue the booms and the fuselage to the wing, be sure that they are straight and parallel.

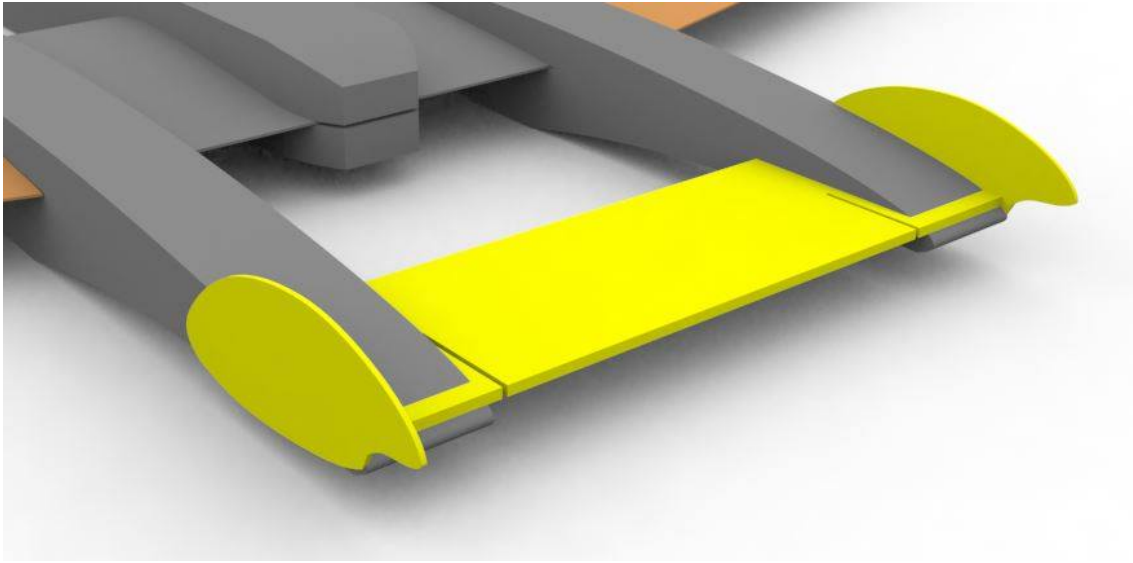
**Step8**

Glue in the horizontal stabilizer in the slot at the back of the booms. Be sure the elevator is oriented properly at the back of the aircraft.



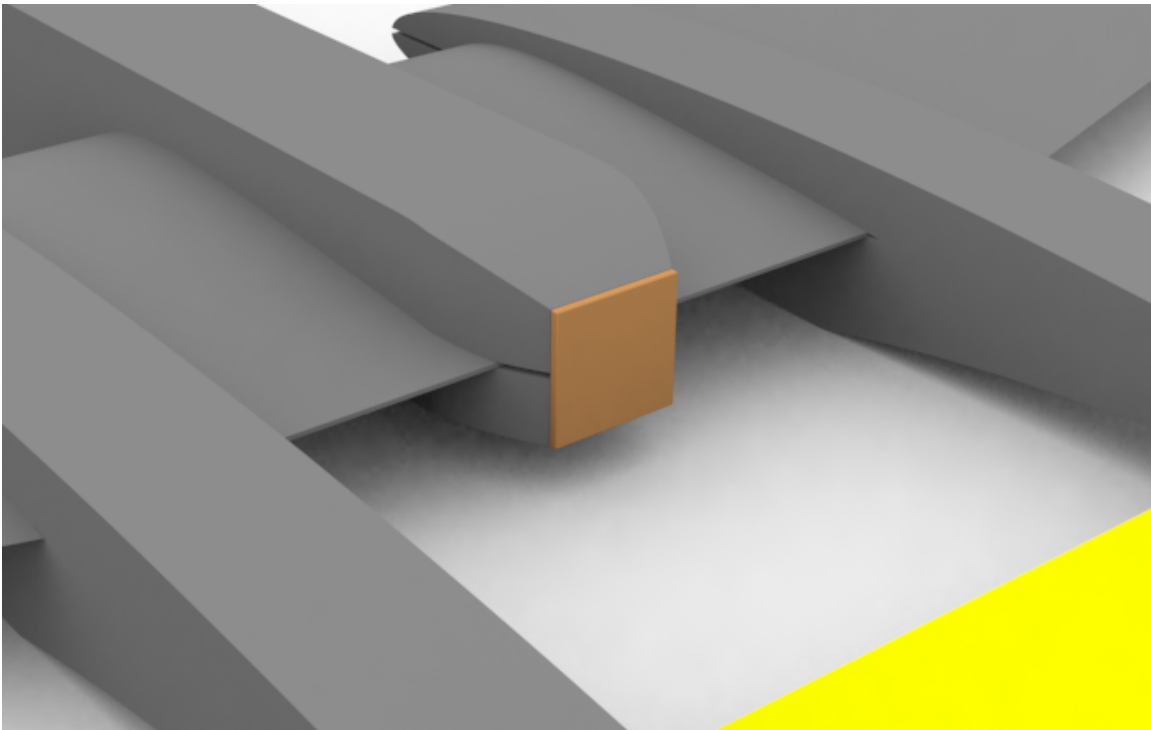
Step9

Glue the vertical stabilizers on the outside rear portion of the booms.



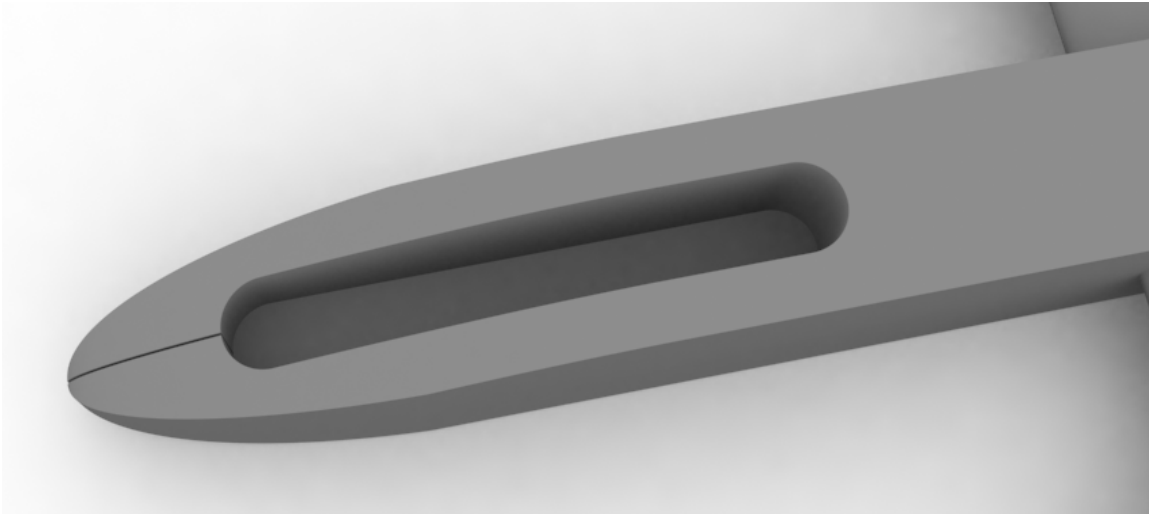
Step10

If you are making the Micro Warlock in a pusher configuration you can fabricate a light plywood motor mount plate and attach to the rear of the fuselage as shown.

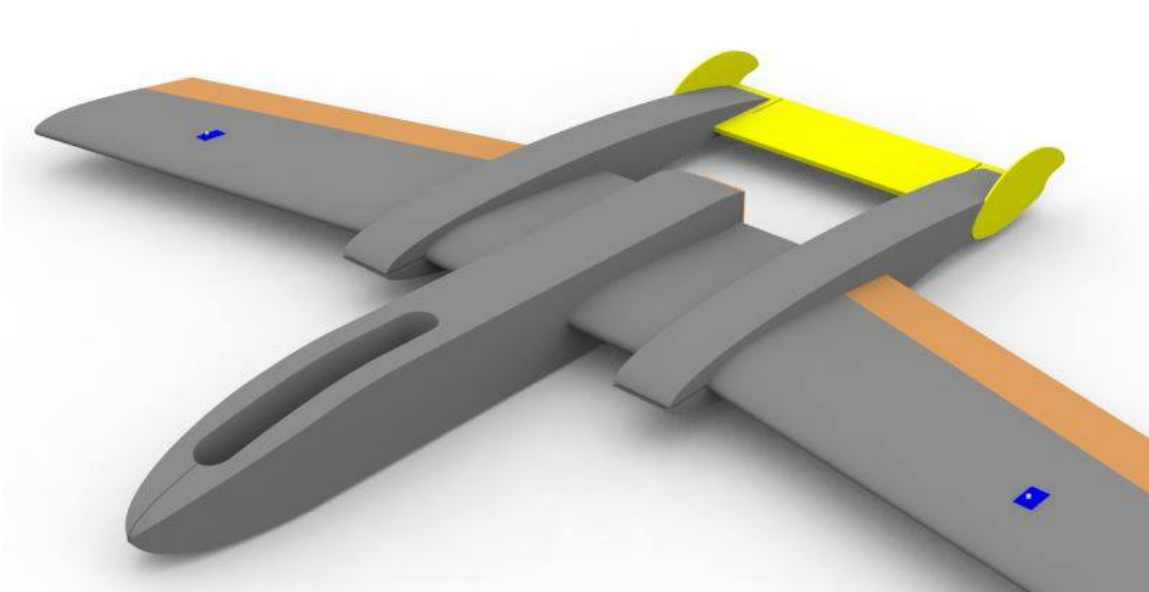


Step11

Cut the bay plug to the desired height and glue it in place. Install the spar on the bottom. As shown in diagram 3.

**Step12**

Laminate the fuselage and the booms

**Step13**

Install the electronics. The elevator needs only small throws. Connect the pushrod to the center hole and the second hole down on the elevator control horn to decrease pitch sensitivity.

Step14

Go out and fly.

Center of Gravity (CG) is 11mm back from the leading edge of the middle wing section.